

Clearance Publish

Clearance = 100mm



Clearance Computation Specification

Products Selected		Value	Status
NSE_0003 - FLEXIBLE CHAINS IN SECTOR 11 FOR - LAR END-CAP CALORIMETER	NFH_0009 – HS METALLIC STRUCTURE - SIDE USA15 - LEVEL +2,77M EXTENSION	0	Not inspected
	NLB_0003 - BARREL CALORIMETER - TRACTION SYSTEM INSTAL.CONFIG	0	Not inspected
	NLB_0004 - BARREL CALORIMETER - TRACTION SYSTEM RUN CONFIG	0	Not inspected
	AT602161MQ - MUON BARREL CHAMBERS DETAILED - SECTOR 11	98.4	Not inspected
	AT602168MQ - MUON BARREL CHAMBERS DETAILED - SECTOR 10	97.5	Not inspected

Computation Result:

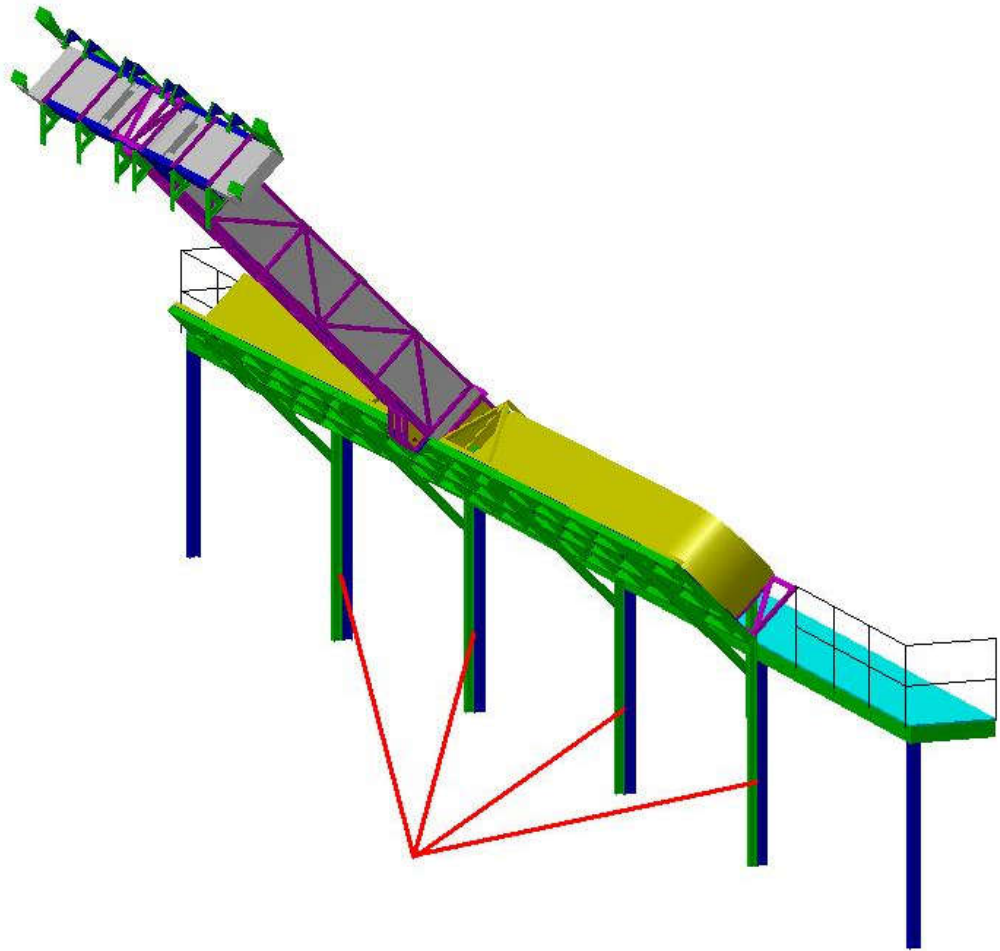


Contact Publish

Contact Computation Specification	
Products Selected	
NSE_0003 - FLEXIBLE CHAINS IN SECTOR 11 FOR - LAR END- CAP CALORIMETER	NFH_0009 – HS METALLIC STRUCTURE - SIDE USA15 - LEVEL +2,77M EXTENSION - SIDE A-C

Computation Result:

NSE__0003	NFH__0009	Contact	Not inspected
-----------	-----------	---------	---------------



SIDE A-C

Sector 11

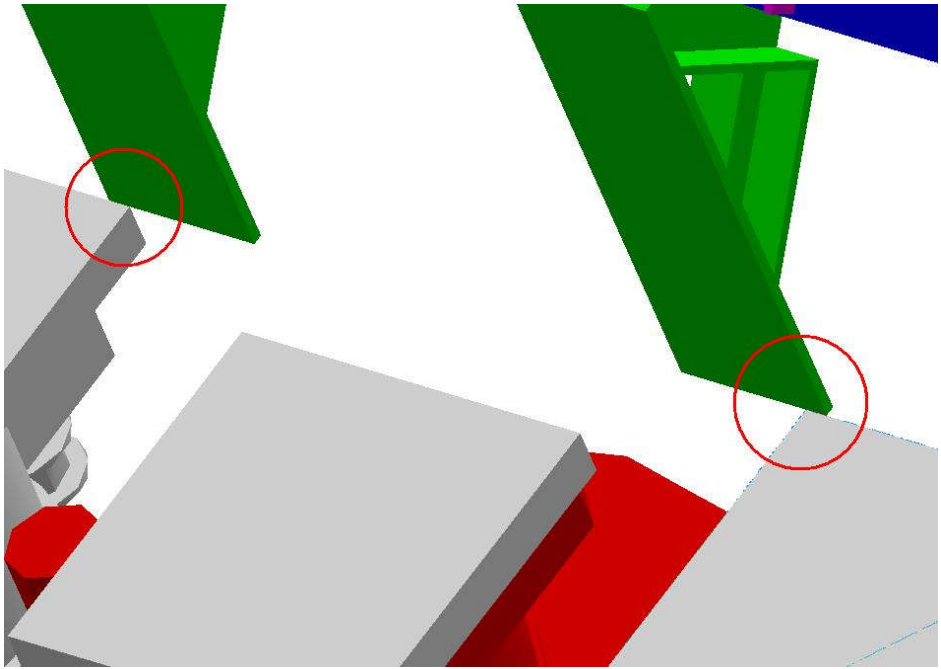
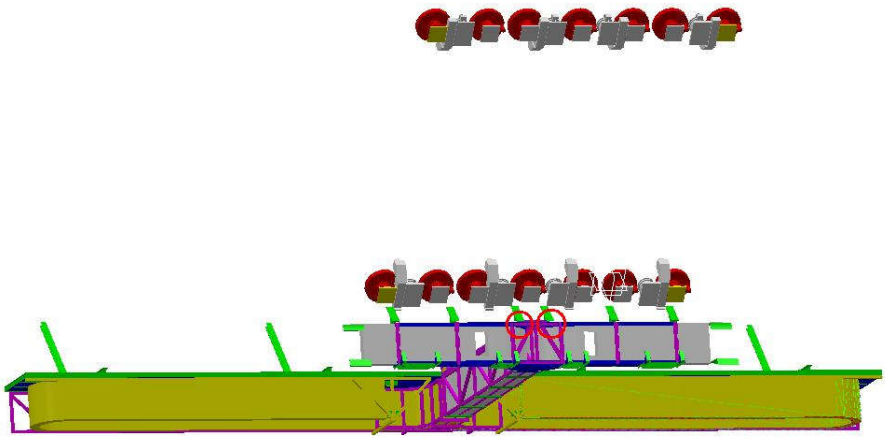


Contact Publish

Contact Computation Specification	
Products Selected	
NSE_0003 - FLEXIBLE CHAINS IN SECTOR 11 FOR - LAR END- CAP CALORIMETER	NLB__0003 - BARREL CALORIMETER - TRACTION SYSTEM INSTAL.CONFIG - SIDE A-C

Computation Result:

NSE__0003	NLB__0003	Contact	Not inspected
-----------	-----------	---------	---------------



SIDE A-C

Sector 11

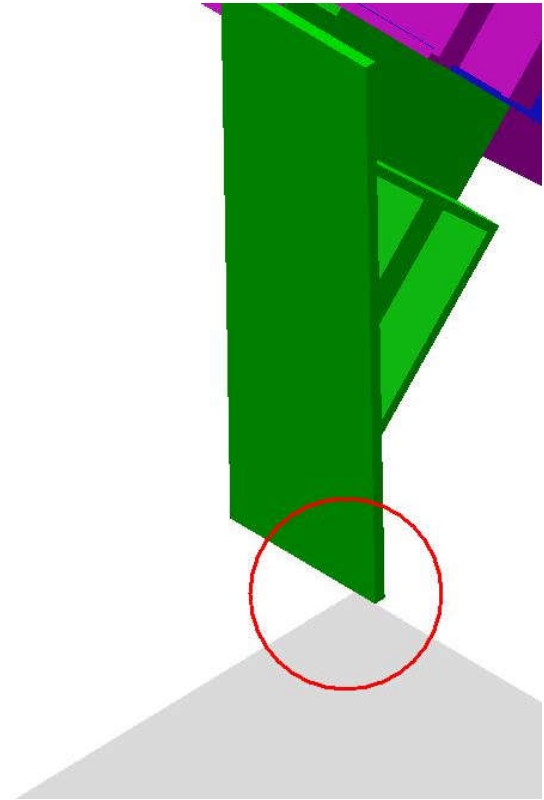
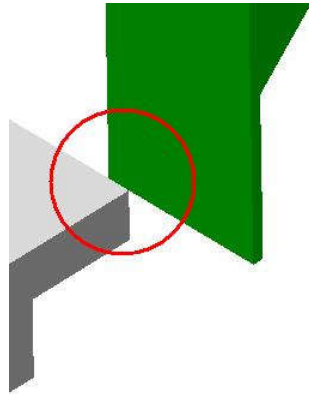
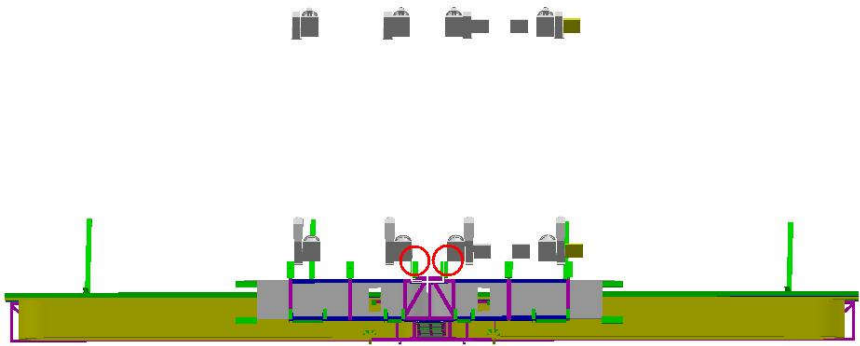


Contact Publish

Contact Computation Specification	
Products Selected	
NSE_0003 - FLEXIBLE CHAINS IN SECTOR 11 FOR - LAR END- CAP CALORIMETER	NLB__0004 - BARREL CALORIMETER - TRACTION SYSTEM RUN CONFIG - SIDE A-C

Computation Result:

NSE__0003	NLB__0004	Contact	Not inspected
-----------	-----------	---------	---------------



SIDE A-C

Sector 11

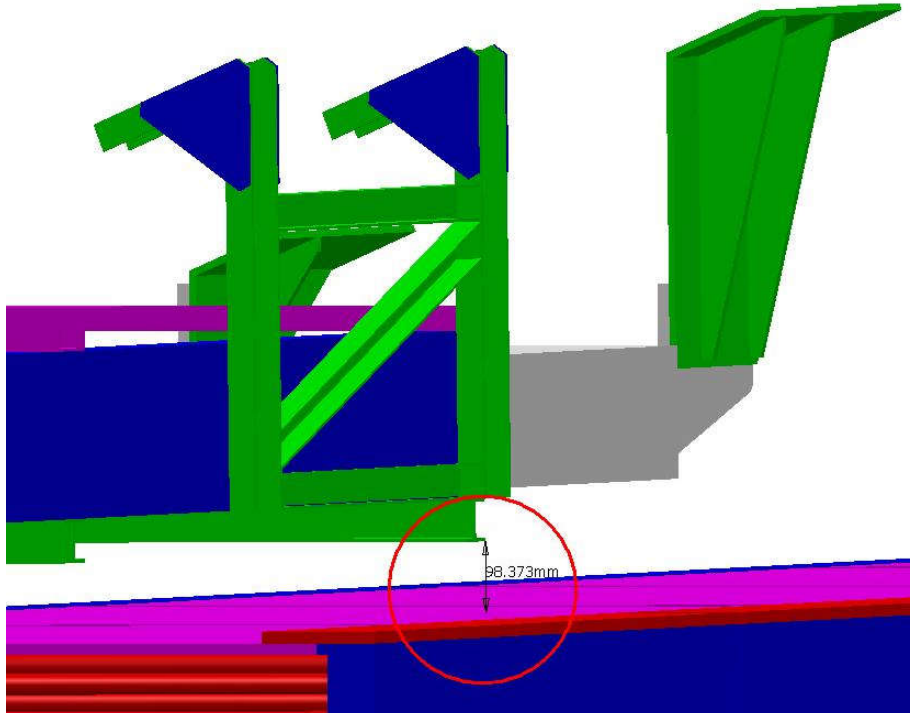
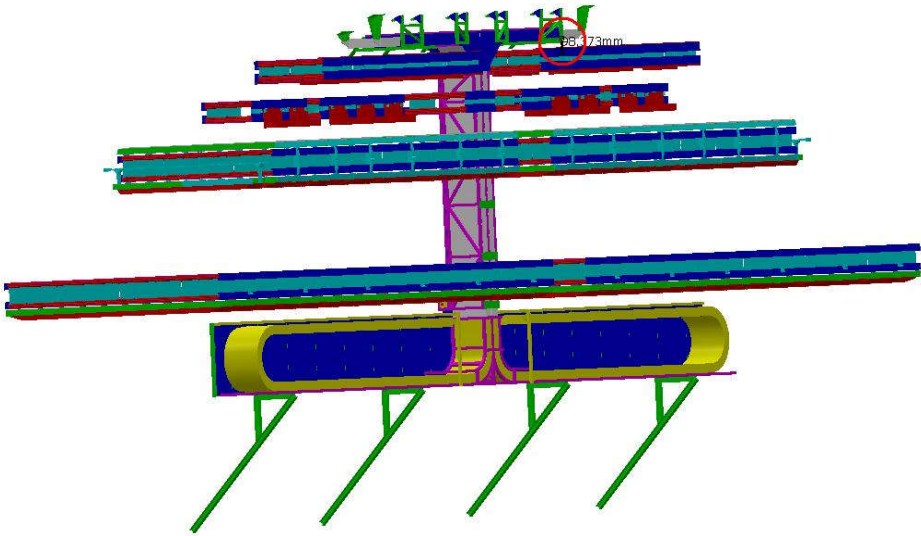


Clearance Publish

Clearance Computation Specification	
Products Selected	
NSE_0003 - FLEXIBLE CHAINS IN SECTOR 11 FOR - LAR END- CAP CALORIMETER	AT602161MQ - Muon Barrel Chambers Detailed - sector 11 - SIDE A-C

Computation Result:

NSE__0003	AT602161MQ	Clearance	98.3734	Not inspected
-----------	------------	-----------	---------	---------------



SIDE A-C

Sector 11

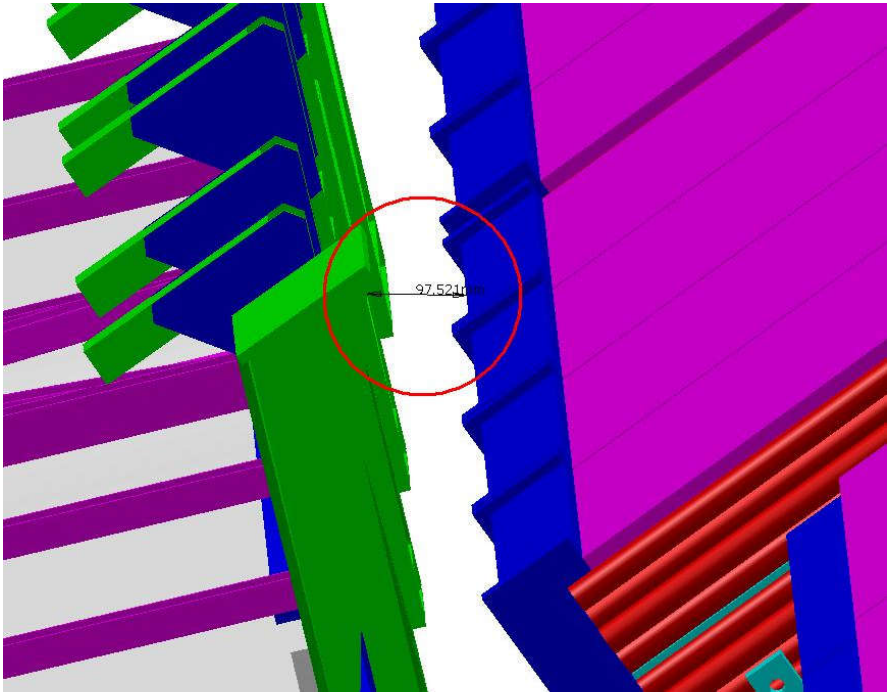
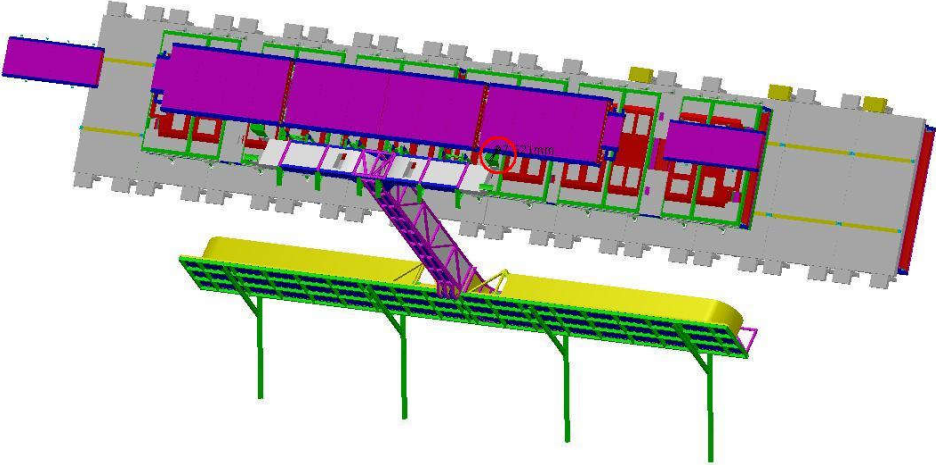


Clearance Publish

Clearance Computation Specification	
Products Selected	
NSE_0003 - FLEXIBLE CHAINS IN SECTOR 11 FOR - LAR END- CAP CALORIMETER	AT602168MQ - Muon Barrel Chambers Detailed - sector 10 - SIDE A-C

Computation Result:

NSE__0003	AT602168MQ	Clearance	97.5212	Not inspected
-----------	------------	-----------	---------	---------------



SIDE A-C
Sector 10